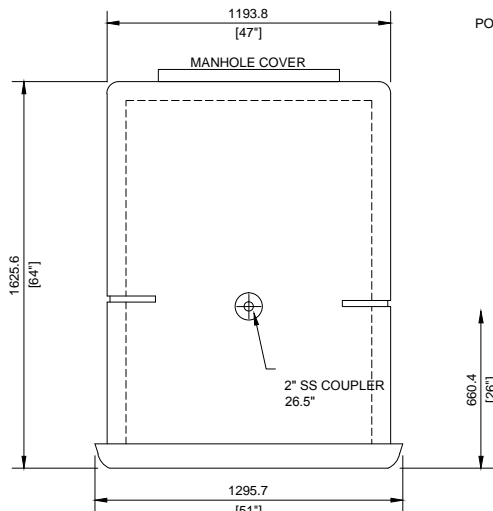
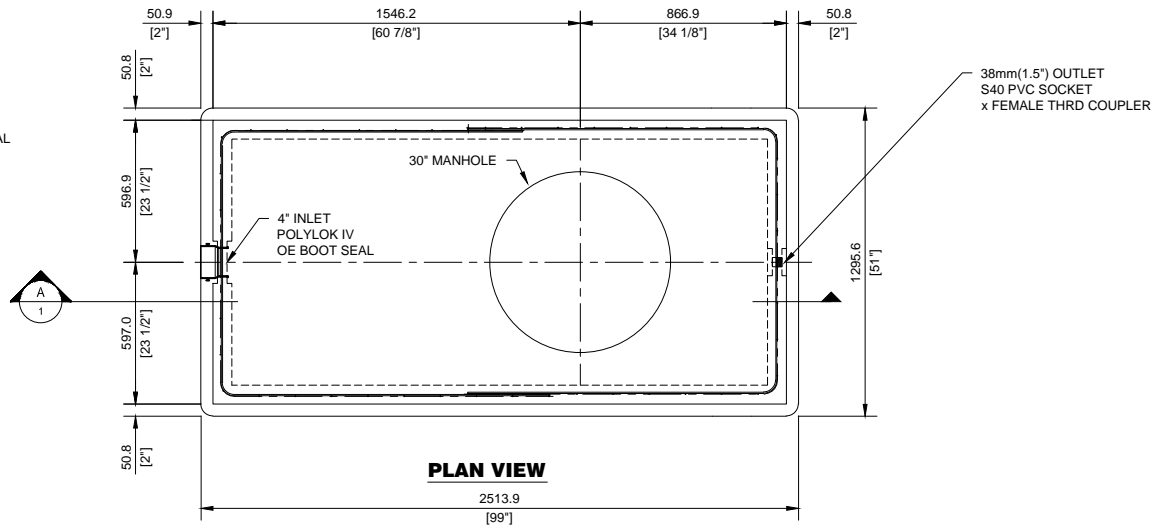


LEFT END VIEW

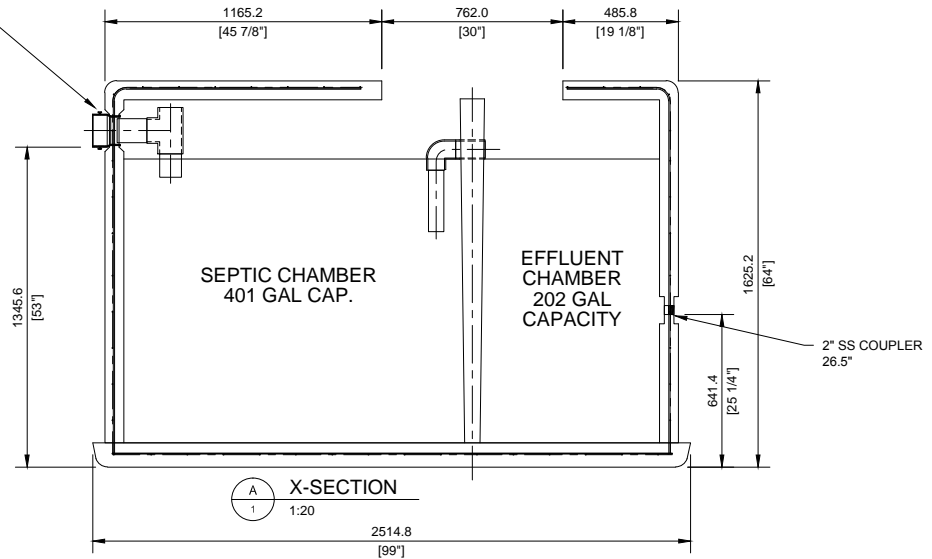


RIGHT END VIEW



PLAN VIEW

102 [4"] POLYLOK
OE BOOT SEAL
POURED IN PLACE



X-SECTION



2839 LITRE (750 GAL) SEPTIC TANK
MODEL ST-750

Form By	PROJECT No	Scale	Drawing Number	Rev.
CGC	12109	1:20	D-12109-ST-750	A

FABRICATION NOTES:

THIS DRAWING IS THE PROPERTY OF DDI DRAFTING SERVICES AND THEIR CLIENTS. ANY REPRODUCTION IN WHOLE OR PART WITHOUT THE EXPRESS WRITTEN CONSENT IS PROHIBITED.

MODEL:	ST-750		TOTAL CAP:	2839 LITRES		WORKING CAP:	1820 LITRES		CONCRETE SPECIFICATIONS	
CSA APPROVED	IMP.	METRIC	IMP.	METRIC	IMP.	METRIC	IMP.	METRIC	MINIMUM STRENGTH:	32 mPa
WIDTH:	51"	1346 mm	INLET HEIGHT:	53"	1346 mm	LIQUID DEPTH:	49"	1245 mm	FIBER REINFORCEMENT:	1.5" SIKA
LENGTH:	99"	2515 mm	OUTLET HEIGHT:	26.5"	660 mm	FLUSH VOL.:	90 GAL	340 L	CEMENT TYPE:	50
HEIGHT:	64"	1626 mm	WEIGHT:	7000 lbs	3175 kg	MAX. COVER:	72"	1829 mm	WATER TO CEMENT RATIO:	0.35
MAX. BURIAL DEPTH:	1830 mm		SERIAL #:			DATE:			AIR ENTRAINMENT:	5 - 7%